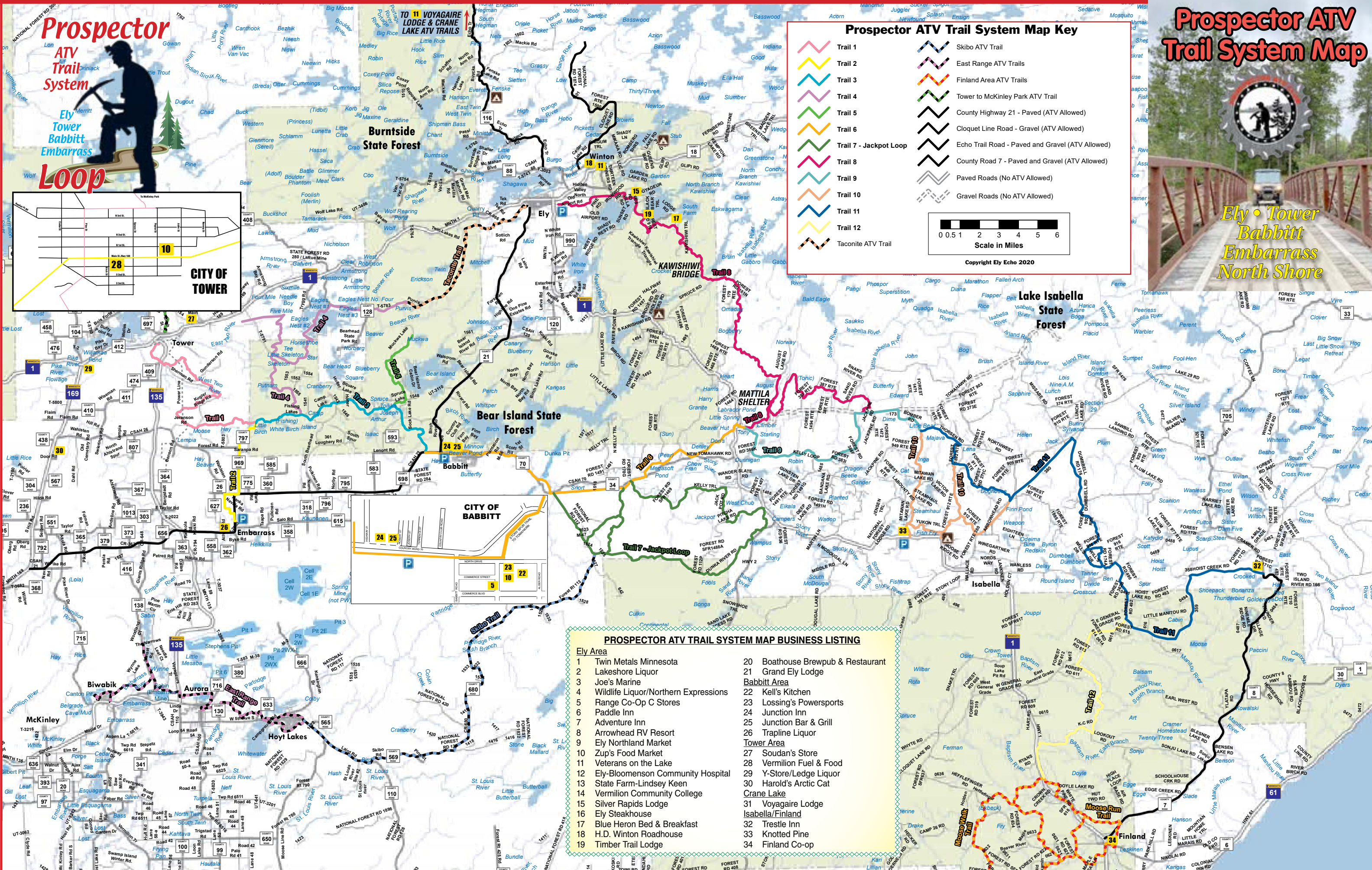


# Prospector ATV Trail System Map



Ely • Tower  
Babbitt  
Embarrass  
North Shore



## Prospector ATV Trail System

**Ely Tower Babbitt Embarrass Loop**

**CITY OF TOWER**

### Prospector ATV Trail System Map Key

	Trail 1		Skibo ATV Trail
	Trail 2		East Range ATV Trails
	Trail 3		Finland Area ATV Trails
	Trail 4		Tower to McKinley Park ATV Trail
	Trail 5		County Highway 21 - Paved (ATV Allowed)
	Trail 6		Cloquet Line Road - Gravel (ATV Allowed)
	Trail 7 - Jackpot Loop		Echo Trail Road - Paved and Gravel (ATV Allowed)
	Trail 8		County Road 7 - Paved and Gravel (ATV Allowed)
	Trail 9		Paved Roads (No ATV Allowed)
	Trail 10		Gravel Roads (No ATV Allowed)
	Trail 11		
	Trail 12		
	Taconite ATV Trail		

Scale in Miles: 0 0.5 1 2 3 4 5 6

Copyright Ely Echo 2020

### PROSPECTOR ATV TRAIL SYSTEM MAP BUSINESS LISTING

<b>Ely Area</b>	
1	Twin Metals Minnesota
2	Lakeshore Liquor
3	Joe's Marine
4	Wildlife Liquor/Northern Expressions
5	Range Co-Op C Stores
6	Paddle Inn
7	Adventure Inn
8	Arrowhead RV Resort
9	Ely Northland Market
10	Zup's Food Market
11	Veterans on the Lake
12	Ely-Bloomenson Community Hospital
13	State Farm-Lindsey Keen
14	Vermilion Community College
15	Silver Rapids Lodge
16	Ely Steakhouse
17	Blue Heron Bed & Breakfast
18	H.D. Winton Roadhouse
19	Timber Trail Lodge
20	Boathouse Brewpub & Restaurant
21	Grand Ely Lodge
<b>Babbitt Area</b>	
22	Kell's Kitchen
23	Lossing's Powersports
24	Junction Inn
25	Junction Bar & Grill
26	Trapline Liquor
<b>Tower Area</b>	
27	Soudan's Store
28	Vermilion Fuel & Food
29	Y-Store/Ledge Liquor
30	Harold's Arctic Cat
<b>Crane Lake</b>	
31	Voyagaire Lodge
<b>Isabella/Finland</b>	
32	Trestle Inn
33	Knotted Pine
34	Finland Co-op



# Prospector

ATV Trail System

Ely Tower Babbitt Embarrass Loop

**4 NORTHERN EXPRESSIONS**  
Ice Cream  
Outdoor Seating • Homemade Waifia Cones  
48 East Sheridan St, Ely • 365-5550

**WILDLIFE LIQUOR**  
Large Selection of Beer & Wine  
COLD BEER • FINE WINES  
LIQUOR • MICROBREWS • ICE  
365-4051 • 1st St. Sheridan St.

**5 RANGE CO-OP C-STORES**  
In Babbitt & Ely • Open 7 Days a Week  
• Non-Oxy Premium Gas • 24 Hour Credit Card Pumps  
BABBITT: 5:30 a.m. - 9 p.m. ELY: 6 a.m. - 9:30 p.m.  
25 Central Blvd. 46 West Sheridan St.

**6 PADDLE INN**  
Open Year Round and located on the East end of beautiful Ely, MN  
Call (218) 365-6036  
www.paddleinnely.com  
1314 E. Sheridan St., Ely

**7 Adventure Inn**  
• Free Wi-Fi • Microwave  
• Fridge, TV • Parking • Plug-ins  
• Pet Friendly  
1145 E. Sheridan St., Ely • 218-365-3140  
adventureinn-ely.com • adventureinnely@gmail.com

**8 WILDLY CIVILIZED • BIG RIG FRIENDLY**  
• FOUR SEASON • FULL HOOK-UPS  
• LAUNDRY/SHOWER ROOMS  
RESERVATIONS ONLINE AT RESERVEAMERICA.COM  
2121 E. CAMP ST., ELY

**9 Ely Minnesota's Hometown Grocery Store!**  
Fine selection of fresh produce, deli items, meats, and name brand grocery items.  
1230 E Sheridan St, Ely, MN • 218-365-3216

**10 Famous for Homemade Sausages, Fresh Meats, Produce and Quality Foods at Low Prices!**  
303 E. Sheridan Street, Ely MN 55731  
218-365-3188  
Email your Meat Orders or Food Orders to [aj@zups.com](mailto:aj@zups.com)

**11 Veterans on the Lake Resort**  
A Beautiful Setting for Veterans, Disabled Public, their Families & Friends  
161 Fernberg Rd., Ely MN  
www.veteransonthelakeresort.org

**EBCH**  
Ely-Bloomenson Community Hospital  
24/7 FULLY STAFFED EMERGENCY DEPARTMENT  
With Full On-Site Lab & Diagnostic Imaging Department  
328 W. Conan St. - Ely, MN 55731  
218-365-3271 • ebch.org

**HIT THE TRAILS WITH CONFIDENCE!**  
Insure your ATV with State Farm  
Call for a quote!  
(218) 365-5104

**LINDSEY KEEN AGENCY**  
Open 24 Hours  
25 E. Chapman St., Ely  
Providing Insurance and Financial Services  
www.lindseykeen.com

**Work Outdoors!**  
SPECIALIZED CAREERS ARE WAITING  
For more information, visit [www.vcc.edu](http://www.vcc.edu)

**15 SRL SILVER RAPIDS LODGE**  
Lakeside Cabins & Hotel  
Full Bar • Homemade Pizzas  
Right on the Prospector Trail  
800.950.9425 • SilverRapidsLodge.com • 459 Kawishiwi Trail, Ely

**Great Steaks! Great Service!**  
**Ely STEAK HOUSE**  
Home of the Famous "Bucky Burger!"  
Beer Sold by the 6 pack  
210 E. Sheridan St.  
By 218-365-7412  
www.elysteakhouse.com

**BLUE HERON bed & breakfast**  
The B&B with the Million-Acre Front Yard  
Access the Prospector Loop from our driveway!  
www.blueheronbnb.com  
reservations@blueheronbnb.com  
827 Kawishiwi Trail • Ely, MN 55731

[prospector.ridetrails.org](http://prospector.ridetrails.org)

**HD**  
252 N. MAIN ST WINTON, MN  
WINTON ROADHOUSE  
218-365-5550

Premier Four-Season Modern and Deluxe Accommodations on the White Iron Chain of Lakes, Ely  
**TIMBER TRAIL LODGE**  
Resort & Outfitters  
www.timbertrail.com  
218-365-4879 / 800-777-7348  
629 Kawishiwi Trail - Ely, MN 55731

Great Beer, Great Food! Growlers to go  
**BoatHouse**  
Brewpub & Restaurant  
47 E. Sheridan St  
218-365-4300

**GRAND ELY LODGE**  
450 North Pioneer Rd • Ely, MN 55731  
218-365-5555

**Kell's Kitchen**  
BREAKFAST ALL DAY • DAILY SPECIALS  
31 CENTRAL BLVD • BABBITT (218) 827-3565

Minnesota's Newest Can-Am & Ski-Doo Dealership  
**LOSSING'S**  
30 North Drive Babbitt, MN  
www.lossings.com  
(218) 827-2635

Newest Hotel on the Iron Range  
**JUNCTION INN**  
"Two Great Destinations, One Stop"  
Full Menu • Pull Tabs  
Fireplace • Broasted Chicken  
Welcome ATVs!  
218-827-3666  
Easy Access to Trails!

**TRAPLINE LIQUOR & Convenience Store**  
Beer • Pop • Liquor • Snacks  
Lotto • ATM  
HRS: Mon-Sat 8am-10pm • Sun 11am-6pm  
(218) 984-2962 • 4897 Hwy 21, Embarrass, MN

**GENEX VERMILION FUEL & FOOD**  
6:00 a.m. to 9:00 p.m.  
24 Hour Pay at Pump  
Non-Oxygenated Gas

**SUDAN'S ONLY STORE**  
24 Hour Gas Pump  
with Credit Card  
8:00 a.m. to 6:00 p.m.  
Warm Up With a Pizza!  
Non-Oxygenated Gas

**Y Store**  
& Ledge Liquor Store  
Premium Gas • Groceries • Deli  
Large Selection of Wines, Beers & Spirits  
6368 Highway 169 • Tower, MN

**HAROLD'S ARCTIC SALES INC.**  
Full Line of Arctic Cat Products  
**ARCTIC CAT**  
Parts • Accessories • Service  
(218) 741-4275 • 6734 Hwy 169 • Tower, MN

**NEWSPAPER, ADVERTISING, PRINTING, COPYING, FAX**  
**THE ELY ECHO**  
15 E. Chapman St. • Ely, MN  
55731 • 218-365-3141  
www.elyecho.com

Outdoor Adventure. Comforts of Home.  
**HOUSEBOAT VACATIONS**  
Dining Room • Broken Skeg Bar  
Open every day!  
800-882-6287  
www.houseboatvacations.com

**Knotted Pine Inn & Tavern**  
Modern Cabins  
On & Off Sale Liquor  
Premium Gas & Oil  
Trailer Parking  
9702 Highway 1  
Isabella, MN 55607  
(218) 323-7681  
www.KnottedPine.com

**Finland Coop**  
FULL MENU • FULL BAR  
All you can eat BBQ Ribs Sat.  
Located right on the Prospector Loop ATV Trail System  
OPEN 7 DAYS A WEEK

Minnesota's Oldest Continuously Operating Co-op  
**Finland Coop**  
MEET ME AT THE CO-OP!  
Open 6am-6pm Mon.-Sat. & 8am-6pm Sunday.  
Shopping • Retail • Gas Station  
finlandcoop.com • (218) 353-7389  
6648 MN-1, Finland MN

## Prospector Hosting in Ely, Babbitt, Embarrass and Tower

# 2021 RIDE AND RALLY

## Sept. 17-19, 2021 ATV MN State Convention

**Ride & Rally Sept 17-19, 2021**

**FRIDAY 9.17.21**  
8am ..... Registration opens  
8am ..... Pancake Breakfast Timber Hall Embarrass  
10am ..... VIP Rides Begin  
Noon-2pm ..... VIP Lunch on Lake Vermilion  
Time TBA ..... ATV Big Air Tour in Babbitt  
5pm-7 ..... Dinner Specials at Local Restaurants

**Saturday Night @ Historic Pioneer Mine:**  
4-8pm ..... Silent Auction to benefit ATVM  
5-7:30pm ..... ATVM Ride and Rally Banquet  
7pm ..... General Membership Meeting & Election  
ATVM Live Auction to follow

**SUNDAY 9.19.21**  
9am ..... ATVM board meeting at Grand Ely Lodge

Register for Ride and Rally 2021 at [ATVAM.org](http://ATVAM.org).

**TWIN METALS MINNESOTA**  
Twin Metals Minnesota proudly supports the Prospector ATV Club  
For more information visit [www.twm-metals.com](http://www.twm-metals.com)

**LAKESHORE LIQUOR**  
OPEN MON-SAT 8 A.M. - 10 P.M. SUN 11-6  
438 E SHERIDAN ST, ELY ~ (218) 365-4011  
OPEN SUNDAYS FROM 11-6

**Joe's Marine & Repair**  
Chainsaw Sales, Repair & Accessories  
25 West Chapman Street, Ely, MN 55731 • Ph: 218-365-6264

Support the Sport - Join the Prospector ATV Club!

**Babbitt Area Trails**  
Stony Spur and Jackpot

**Babbitt ATV & Snowmobile Club**  
Babbitt, Minnesota

The remote Stony Spur II Trail begins in Babbitt and runs almost 20 miles eastward, just south of the Bear Island State Forest. There are a few stream and water crossings. The Short Lake Gravel Pit is near the trail and is open for riding and climbing. The trail is maintained by the City of Babbitt and the Babbitt ATV/Snowmobile Club. This trail is part of the Prospector Alliance Trail system, the numbers 6 and 7 indicate which section of the Prospector Trail system.

For more information contact:  
Dave Soular at 218-827-3504

**Jackpot Loop - 31.8 miles**  
Stony Spur (Babbitt to Matilla Shelter) - 18.4 miles  
Babbitt to Point 1 - 6.7 mi Point 1 to Point 3 - 13.9 mi  
Point 1 to Point 2 - 4.2 mi Point 2 to Point 3 - 13.7 mi

It is the responsibility of the user to acquire the current Motor Vehicle Use Map - which designates a road or trail available for motor vehicle use (pursuant to 36 CFR 212.51). This can be obtained from any Forest Service office or from the Superior National forest website: [www.fs.usda.gov/detail/superior/recreation/ohv](http://www.fs.usda.gov/detail/superior/recreation/ohv)

**SHAGAWA LAKE**  
**MINNERS LAKE**

**YELLOW = STATE HIGHWAY = NO ATV**  
**OTHER = CLASS 1 & 2 ATVs OTHER THAN STATE HWY.**

**PROSPECTOR TRAIL 8**

**THE ELY CITY MAP**  
Welcome to the North Country